

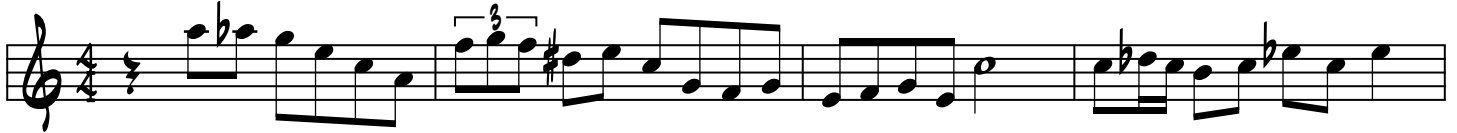
BLUES UP AND DOWN

TENOR SAX

"HEAVY JUICE" - SCOTT HAMILTON & HARRY ALLEN

TRANSCRIBED BY
STEVE NEFF

C7 SCOTT HAMILTON



F7

C7



D-7

G7

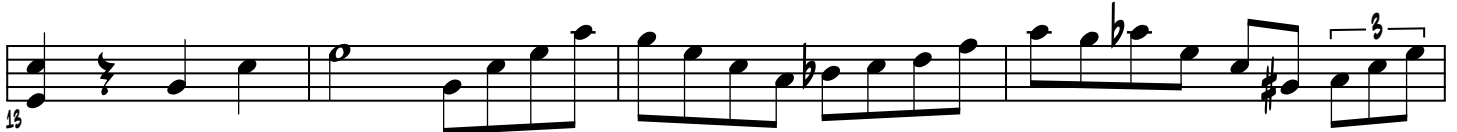
C7

D-7

G7



C7 HARRY ALLEN



F7

C7



D-7

G7

C7

D-7

G7



C7 SCOTT HAMILTON



F7

C7



BLUES UP AND DOWN

2

D-7 G7 C7 D-7 G7

33

C7 HARRY ALLEN

37

F7 C7

41

D-7 G7 C7 D-7 G7

45

C7 SCOTT HAMILTON

49

F7 C7

53

D-7 G7 C7 D-7 G7

57

C7

61

BLUES UP AND DOWN

F7 C7

65

D-7 G7 C7 D-7 G7

69

C7

75

F7 C7

77

D-7 G7 C7 D-7 G7

81

C7

85

F7 C7

89

D-7 G7 C7 D-7 G7

93

BLUES UP AND DOWN

4

97 **C7**
Musical staff with notes and a triplet of eighth notes.

101 **F7** **C7**
Musical staff with notes and a triplet of eighth notes.

105 **D-7** **G7** **C7** **D-7** **G7**
Musical staff with notes and a triplet of eighth notes.

109 **C7**
Musical staff with notes and a triplet of eighth notes.

113 **F7** **C7**
Musical staff with notes and a triplet of eighth notes.

117 **D-7** **G7** **C7** **D-7** **G7**
Musical staff with notes and a triplet of eighth notes.

C7 HARRY ALLEN

121
Musical staff with notes and a triplet of eighth notes.

125 **F7** **C7**
Musical staff with notes and a triplet of eighth notes.

BLUES UP AND DOWN

D-7 G7 C7 D-7 G7

129

Detailed description: This musical staff contains measures 129 through 136. It begins with a treble clef and a 4/4 time signature. The notes are: 129: D4, E4, F4, G4, A4, B4, C5, B4, A4, G4, F4, E4, D4; 130: D#4, E4, F4, G4, A4, B4, C5, B4, A4, G4, F4, E4, D4; 131: D4, E4, F4, G4, A4, B4, C5, B4, A4, G4, F4, E4, D4; 132: D4, E4, F4, G4, A4, B4, C5, B4, A4, G4, F4, E4, D4; 133: D4, E4, F4, G4, A4, B4, C5, B4, A4, G4, F4, E4, D4; 134: D4, E4, F4, G4, A4, B4, C5, B4, A4, G4, F4, E4, D4; 135: D4, E4, F4, G4, A4, B4, C5, B4, A4, G4, F4, E4, D4; 136: D4, E4, F4, G4, A4, B4, C5, B4, A4, G4, F4, E4, D4.

C7

137

Detailed description: This musical staff contains measures 137 through 140. It begins with a treble clef and a 4/4 time signature. The notes are: 137: D4, E4, F4, G4, A4, B4, C5, B4, A4, G4, F4, E4, D4; 138: D4, E4, F4, G4, A4, B4, C5, B4, A4, G4, F4, E4, D4; 139: D4, E4, F4, G4, A4, B4, C5, B4, A4, G4, F4, E4, D4; 140: D4, E4, F4, G4, A4, B4, C5, B4, A4, G4, F4, E4, D4.

F7 C7

141

Detailed description: This musical staff contains measures 141 through 144. It begins with a treble clef and a 4/4 time signature. The notes are: 141: D4, E4, F4, G4, A4, B4, C5, B4, A4, G4, F4, E4, D4; 142: D4, E4, F4, G4, A4, B4, C5, B4, A4, G4, F4, E4, D4; 143: D4, E4, F4, G4, A4, B4, C5, B4, A4, G4, F4, E4, D4; 144: D4, E4, F4, G4, A4, B4, C5, B4, A4, G4, F4, E4, D4.

D-7 G7 C7 D-7 G7

145

Detailed description: This musical staff contains measures 145 through 148. It begins with a treble clef and a 4/4 time signature. The notes are: 145: D4, E4, F4, G4, A4, B4, C5, B4, A4, G4, F4, E4, D4; 146: D4, E4, F4, G4, A4, B4, C5, B4, A4, G4, F4, E4, D4; 147: D4, E4, F4, G4, A4, B4, C5, B4, A4, G4, F4, E4, D4; 148: D4, E4, F4, G4, A4, B4, C5, B4, A4, G4, F4, E4, D4.

C7

149

Detailed description: This musical staff contains measures 149 through 152. It begins with a treble clef and a 4/4 time signature. The notes are: 149: D4, E4, F4, G4, A4, B4, C5, B4, A4, G4, F4, E4, D4; 150: D4, E4, F4, G4, A4, B4, C5, B4, A4, G4, F4, E4, D4; 151: D4, E4, F4, G4, A4, B4, C5, B4, A4, G4, F4, E4, D4; 152: D4, E4, F4, G4, A4, B4, C5, B4, A4, G4, F4, E4, D4.

F7 C7

153

Detailed description: This musical staff contains measures 153 through 156. It begins with a treble clef and a 4/4 time signature. The notes are: 153: D4, E4, F4, G4, A4, B4, C5, B4, A4, G4, F4, E4, D4; 154: D4, E4, F4, G4, A4, B4, C5, B4, A4, G4, F4, E4, D4; 155: D4, E4, F4, G4, A4, B4, C5, B4, A4, G4, F4, E4, D4; 156: D4, E4, F4, G4, A4, B4, C5, B4, A4, G4, F4, E4, D4.

D-7 G7 C7 D-7 G7

157

Detailed description: This musical staff contains measures 157 through 160. It begins with a treble clef and a 4/4 time signature. The notes are: 157: D4, E4, F4, G4, A4, B4, C5, B4, A4, G4, F4, E4, D4; 158: D4, E4, F4, G4, A4, B4, C5, B4, A4, G4, F4, E4, D4; 159: D4, E4, F4, G4, A4, B4, C5, B4, A4, G4, F4, E4, D4; 160: D4, E4, F4, G4, A4, B4, C5, B4, A4, G4, F4, E4, D4.

C7

161

Detailed description: This musical staff contains measures 161 through 164. It begins with a treble clef and a 4/4 time signature. The notes are: 161: D4, E4, F4, G4, A4, B4, C5, B4, A4, G4, F4, E4, D4; 162: D4, E4, F4, G4, A4, B4, C5, B4, A4, G4, F4, E4, D4; 163: D4, E4, F4, G4, A4, B4, C5, B4, A4, G4, F4, E4, D4; 164: D4, E4, F4, G4, A4, B4, C5, B4, A4, G4, F4, E4, D4.

BLUES UP AND DOWN

6

F7 C7

D-7 G7 C7 D-7 G7

C7

F7 C7

D-7 G7 C7 D-7 G7

C7

F7 C7

D-7 G7 C7 D-7 G7

189

C7 SCOTT HAMILTON

195

F7 C7

197

D-7 G7 C7 D-7 G7

201

C7 HARRY ALLEN

205

F7 C7

209

D-7 G7 C7 D-7 G7

213

C7 SCOTT HAMILTON

217

F7 C7

221

8

BLUES UP AND DOWN

D-7 G7 C7 D-7 G7

225

C7 HARRY ALLEN

229

F7

C7

231

D-7

G7

C7

D-7

G7

237

C7 SCOTT HAMILTON

241

F7 HARRY ALLEN

C7

245

D-7 SCOTT HAMILTON

G7

C7

D-7

G7

249

C7 HARRY ALLEN

253

BLUES UP AND DOWN

F7 SCOTT HAMILTON **C7**

D-7 HARRY ALLEN **G7** **C7** **D-7** **G7**

C7 SCOTT HAMILTON

F7 HARRY ALLEN **C7**

D-7 SCOTT HAMILTON **G7** **C7** **D-7** **G7**

C7 HARRY ALLEN

F7 SCOTT HAMILTON **C7**

D-7 **G7** **C7** **D-7** **G7**

CONTINUE TO PLAY TOGETHER DURING SHOUT CHORUS.....